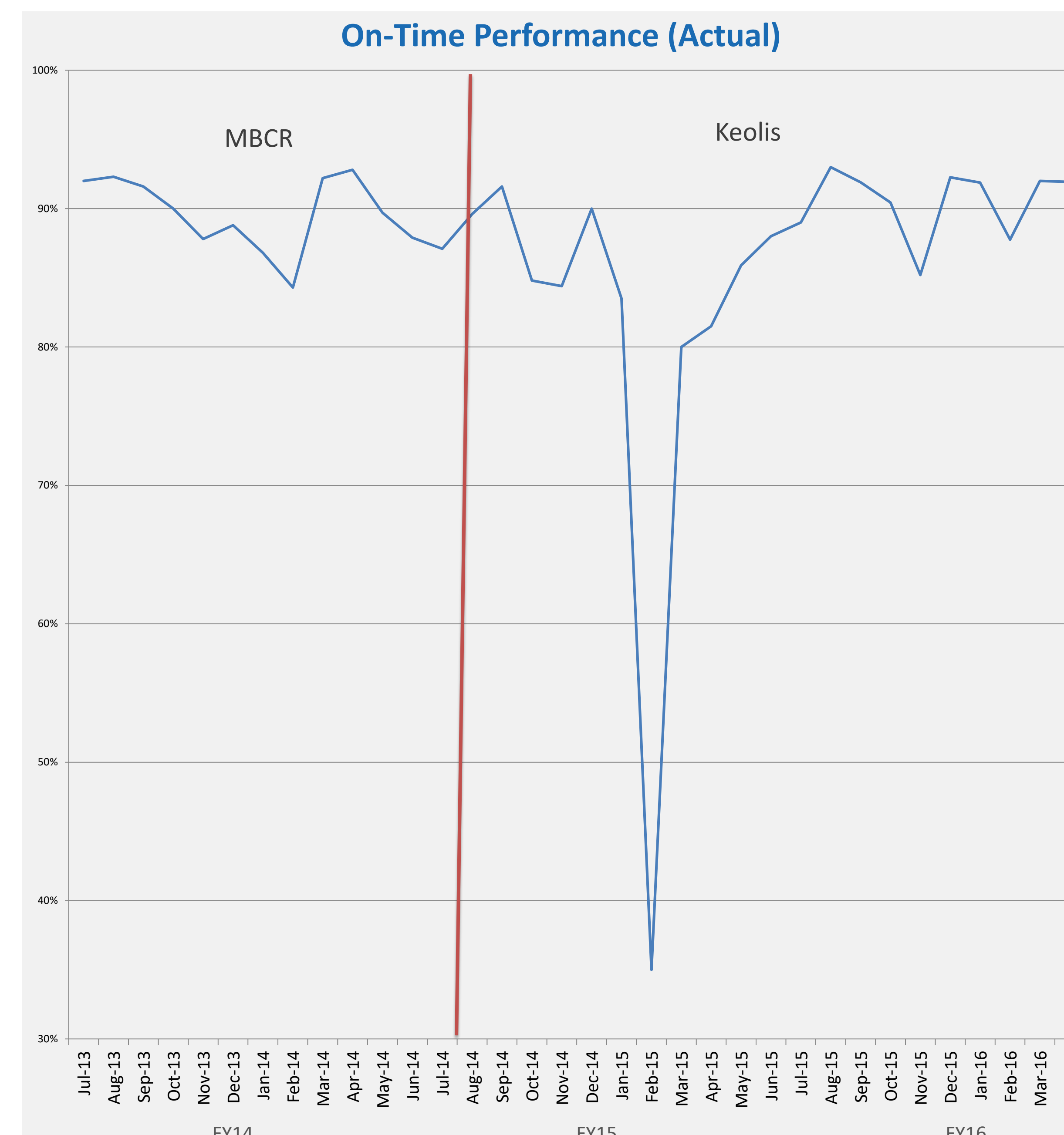
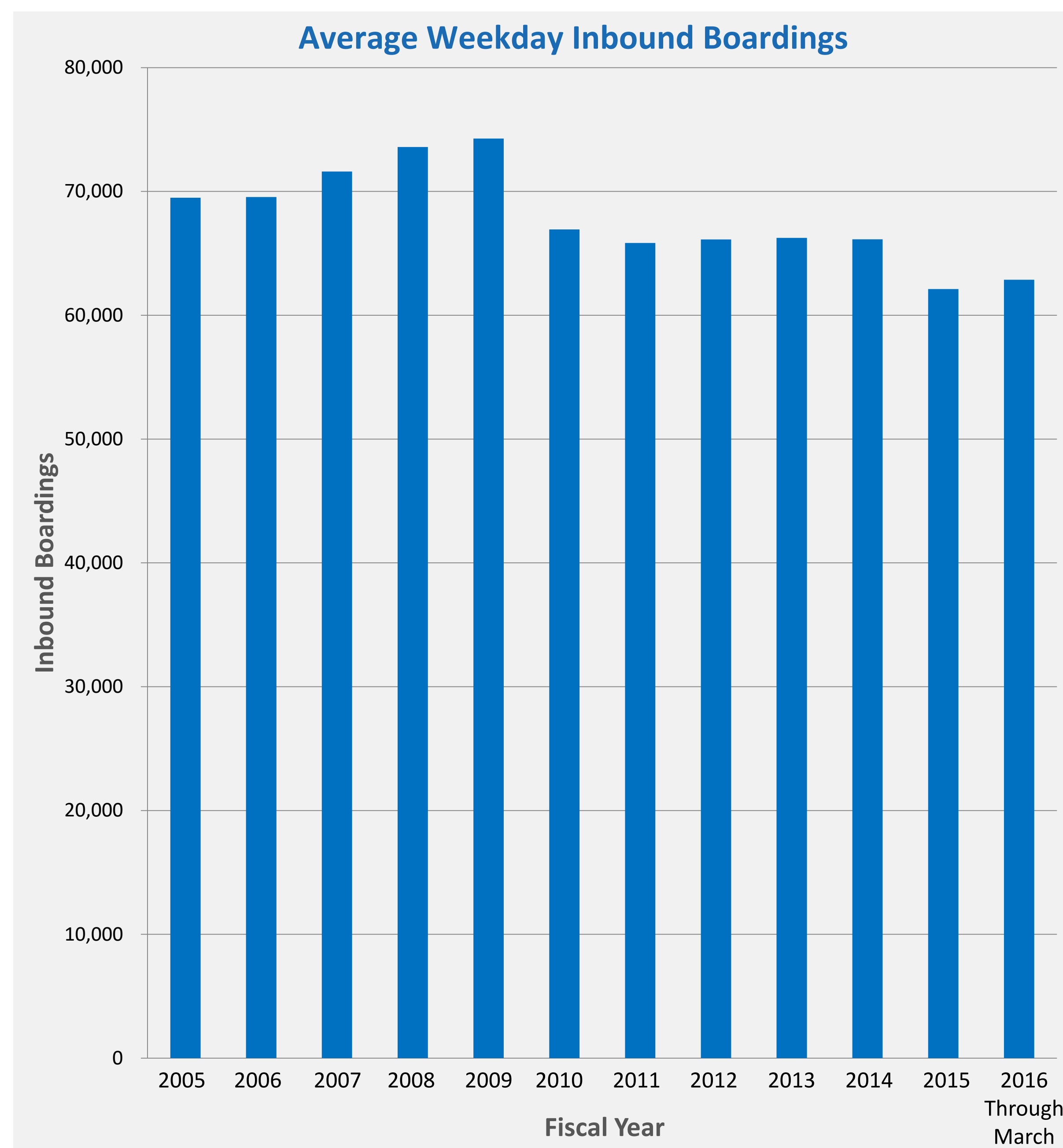
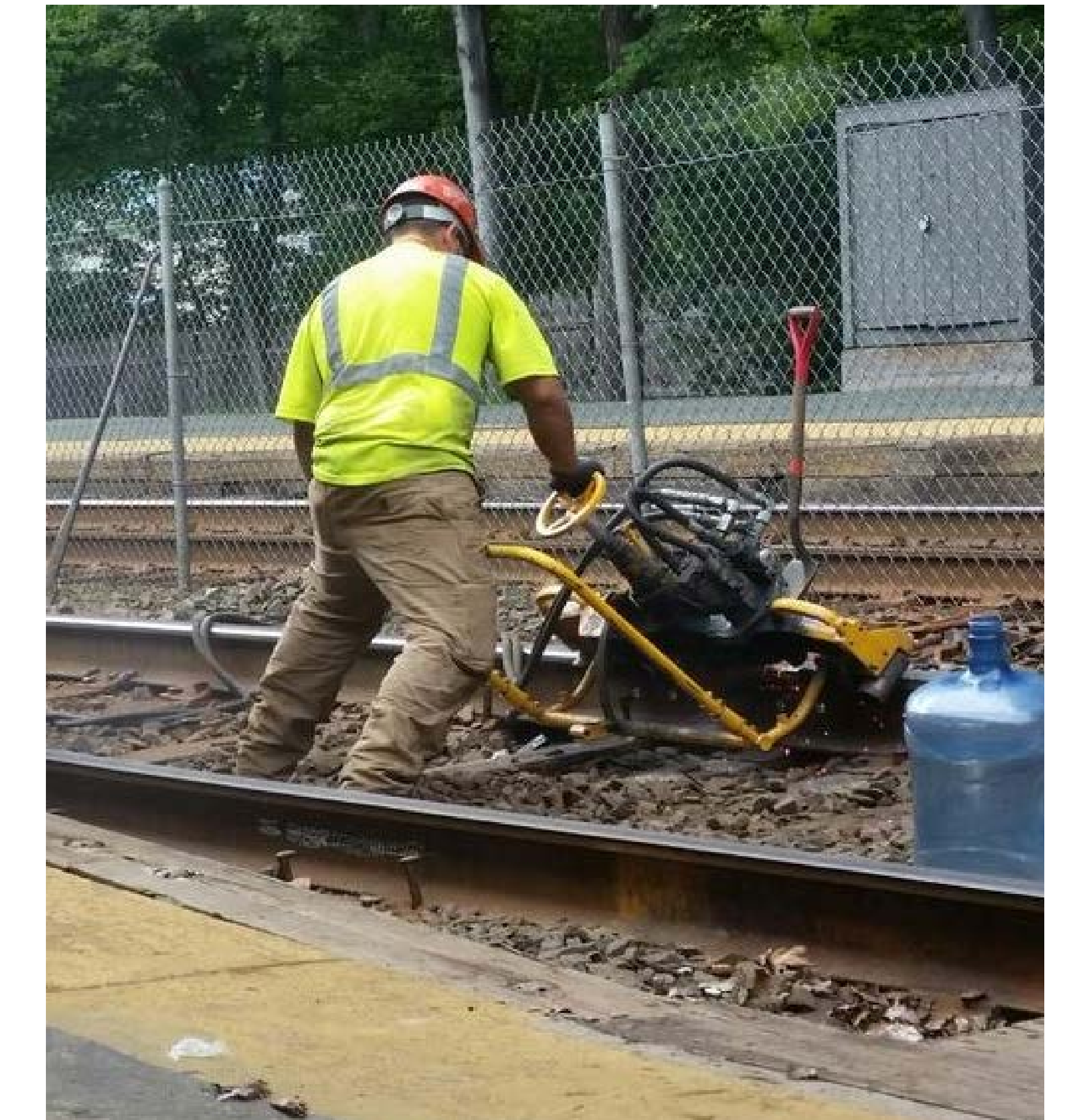


# STATE OF THE SYSTEM REPORT

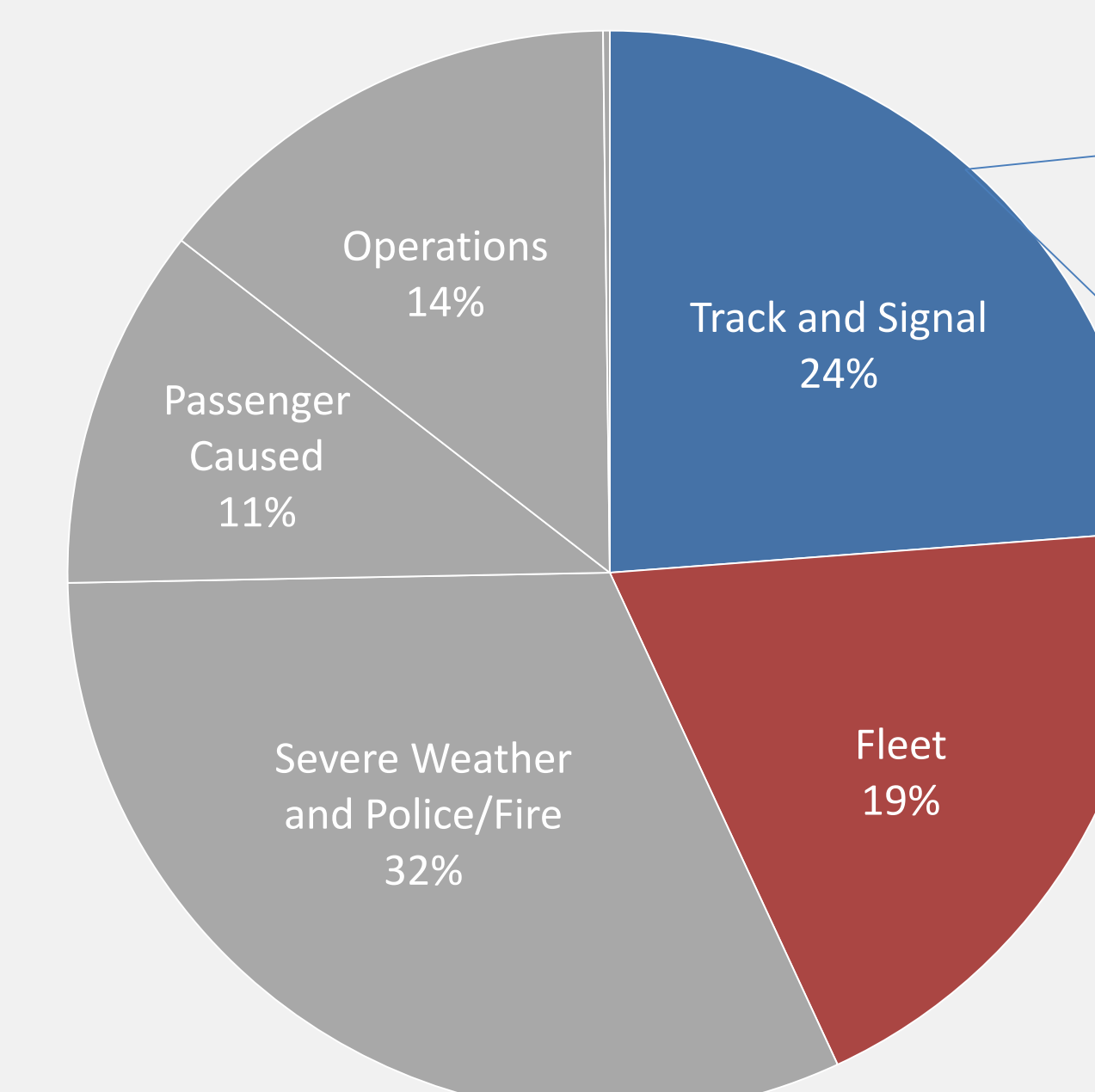
## Commuter Rail

- Ridership peaked in 2009 but has been slower to recover than other modes
- Unreliability, crowding, and cost are cited by customers as barriers to use (2015 survey)
- Commuter rail performance is degraded by aging rolling stock (locomotives and coaches), and poor condition of track and signals



Rail Fleet Age (Years)									
	0-5	6-10	11-15	16-20	21-25	26-30	31-35	36-40	41-45
Coaches	75	2	33	0	0	228	0	57	0
Locomotives	20	0	0	0	12	25	0	16	25
Most coaches and more than half of locomotives are within industry expected lifespan							57 coaches and 41 locomotives are beyond useful life		

**Delays by Cause  
July 2014-July 2015**



**Track and Signal Delays**

